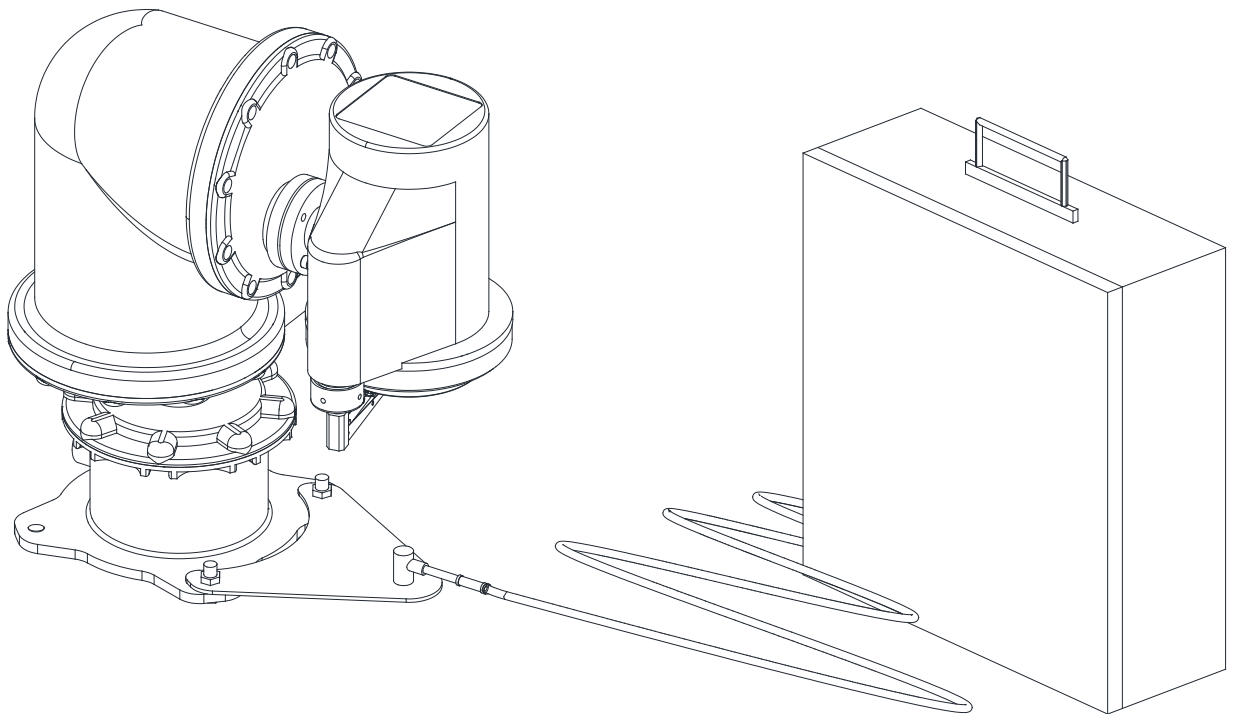


USER GUIDE BOOK

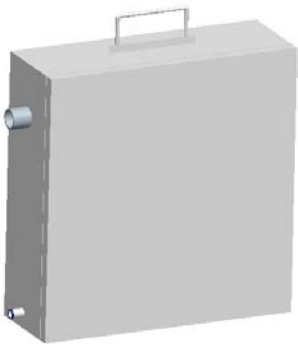
EXWJ400

Explosive proof Water Jet



Optional Accessories

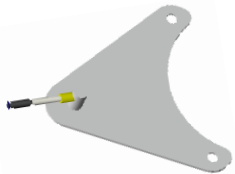
<Components>



A. Water Jet package



B. Tube



C. Nozzle install bracket

<Specification>

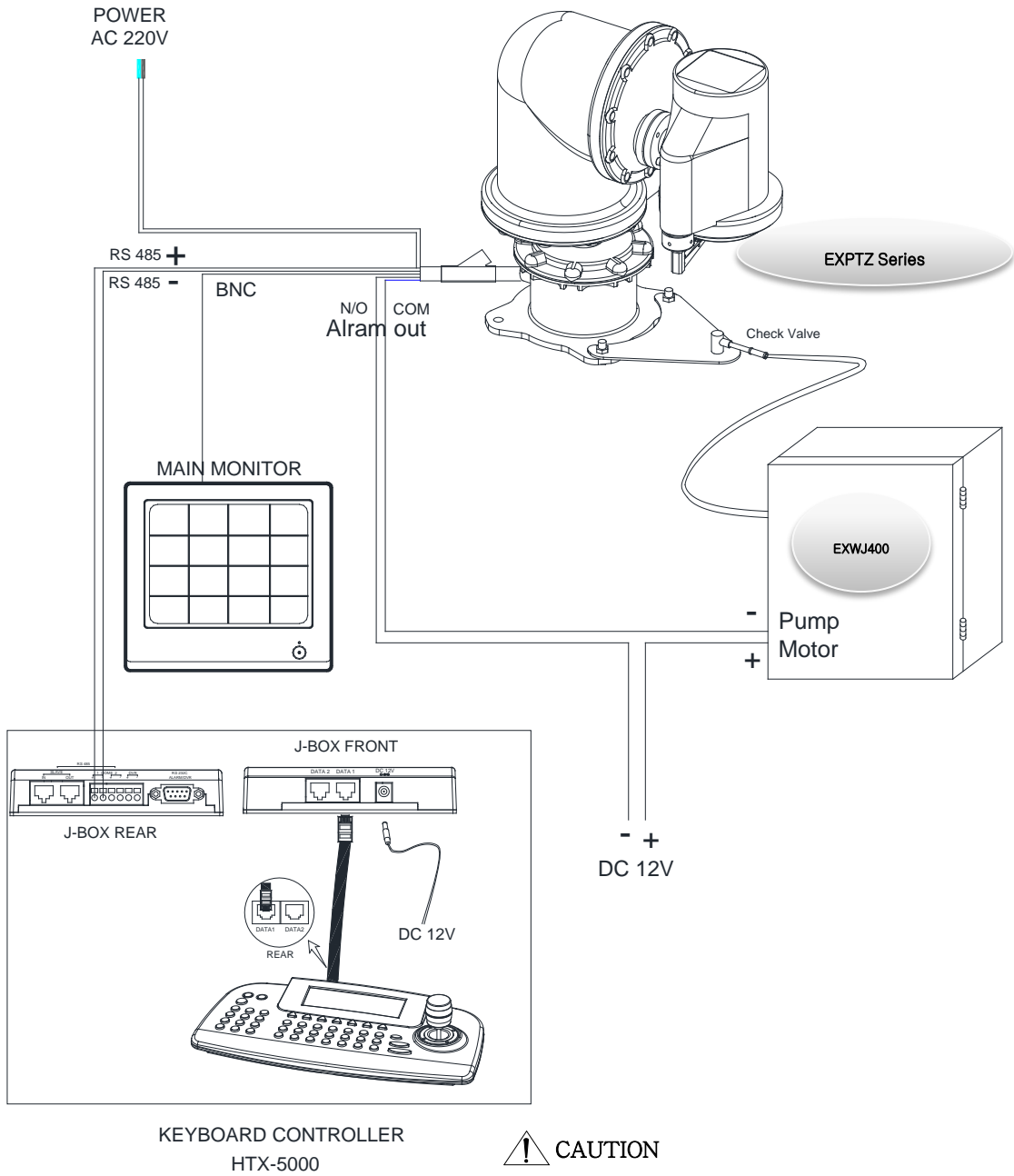
EXWJ400 _ Explosive water jet	
Material	SUS304
Thickness	1.2mm
Size	350(W) x 340(H) x120(D)
Weight	12kg(include Liquid)
Nozzle	Ø1.0
Water Capacity	4.0L
TUBE	Ø6.0 X 3m
Rated Voltage	DC 12 V
Maximum Current	1.0A
Input	20W
Maximum Pressure	25 psi (1.8kgf/cm ²)
Water Temperature	0°C ~ 40°C

* The temperature can be lower until -10°C depended on thermal properties of liquid of inside tank such as antifreeze.

<Key Feature>

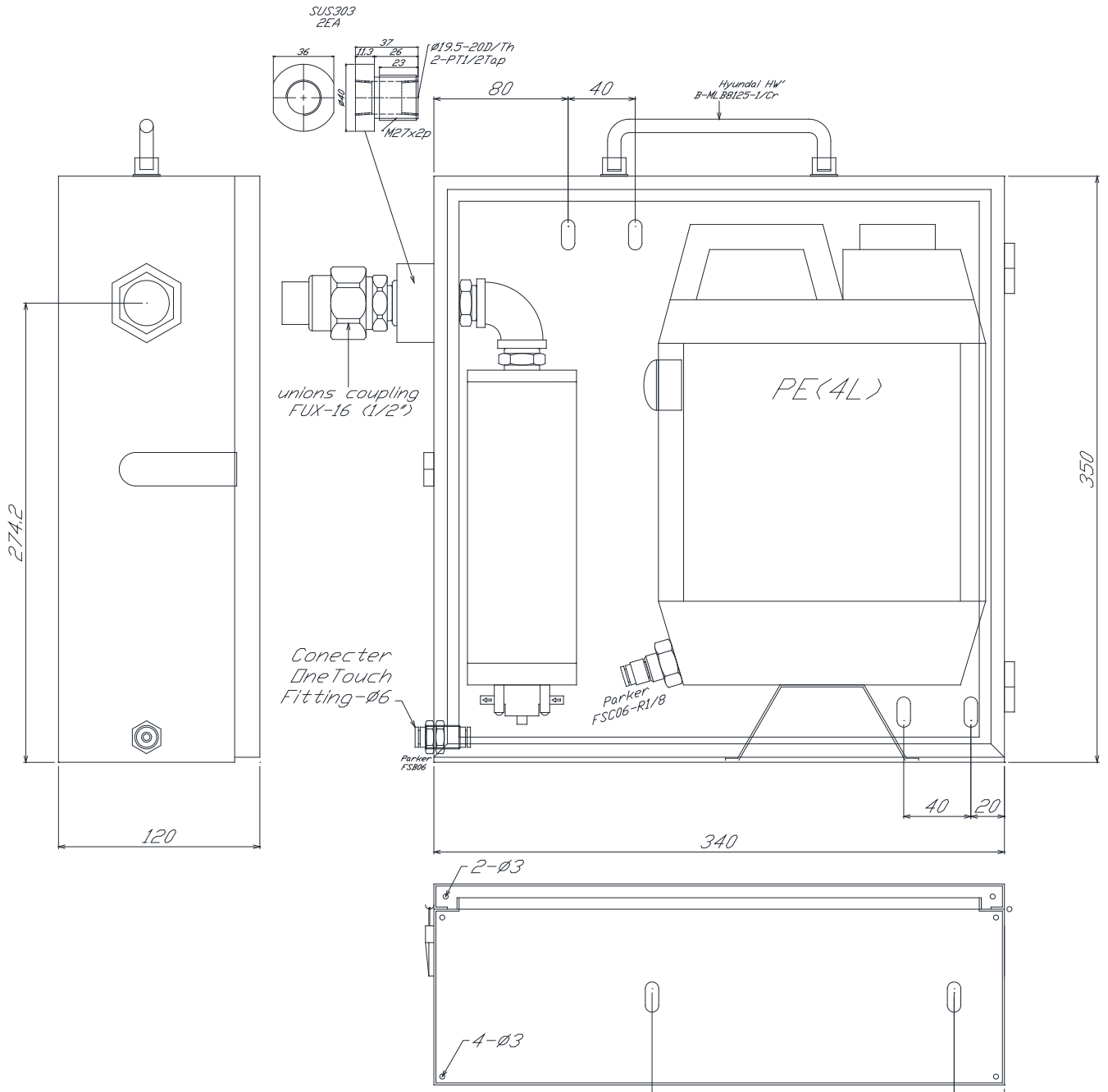
- IECEx Grade Exd IIC T6 IP67.
- For use in variety of harsh and/or hazardous environments, including marine environment.
- Specialized for High Speed EXPTZ Series.
- Easy to installation.
- Easy to clean any dried dust on the glass.

EXWJ400 Schematic



- ! CAUTION**
- 1) If EXWJ400 is applied to EXPTZ, the alarm-out can't be used.
 - 2) It is recommended that the water-Jet tank should be located on equal or lower (under 3m) level than the nozzle location.

EXWJ400 Drawing



Operating

[Do following step to operate water jet function]




1. Save the location of nozzle position (washing) on Preset 59.

* First of all, The EXPTZ pan/tilt direction should be decided and saved that window glass of camera housing toward nozzle of water jet on preset 59.
 (Refer to the "Program and Function Operating 1-2 preset" about preset method)

2. Push The [4+On] button on HTX-5000 Keyboard.

* Push the 88+preset button at Pelco protocol.

Result : 1) Pan/Tilt's moving to nozzle position (location Preset 59)
 → 2) Auto-Stop after Spray water & Wiping (3 sec, 6 Wiping)
 → 3) Pan/Tilt's moving back to the previous position

Water jet	<p>① Set washing position -.Move the window face to nozzle by using pan/tilt and save the position on preset 59.</p> <p>② Press  and  button. (88+  Preset) at Pelco Protocol</p>	<p>- Set the specific position to wash front window toward the nozzle on preset 59.</p> <p>-Run washing and wiping.</p>	Check water level in the tank periodically.
-----------	--	---	---